

# EV- Agricultural Machinery



001\_vray.max



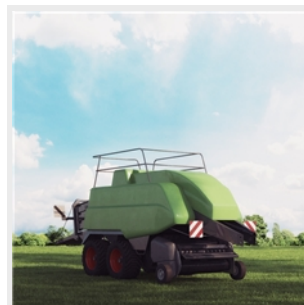
002\_vray.max



003\_vray.max



004\_vray.max



005\_vray.max



006\_vray.max



007\_vray.max



008\_vray.max



009\_vray.max



010\_vray.max



011\_vray.max



012\_vray.max



013\_vray.max



014\_vray.max



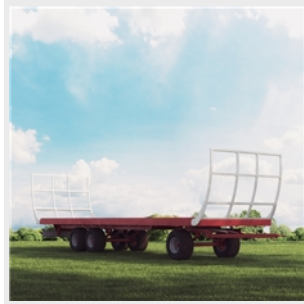
015\_vray.max



016\_vray.max



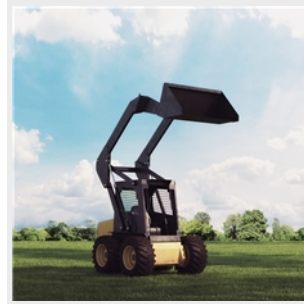
017\_vray.max



018\_vray.max



019\_vray.max



020\_vray.max



021\_vray.max



022\_vray.max



023\_vray.max



024\_vray.max



025\_vray.max

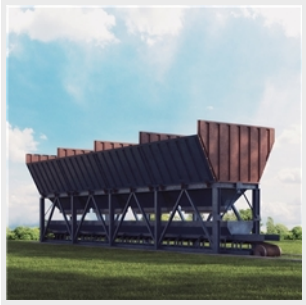
\_\_\_\_\_



026\_vray.max



027\_vray.max



028\_vray.max



029\_vray.max



030\_vray.max